

# Influence™ LC

## Disease Prevention for Greenhouses

- Fungicide registered for use on cucumber and tomato
- Influence LC is an excellent product to include in your IPM program for suppression of powdery mildew
- Use Influence LC in conjunction with systemic fungicides for improved control
- No adverse effects are expected for use with beneficials and pollinators



### Recommendations for Optimal Results

- Use the amount of water needed for full coverage of both side of leaves
- Apply preventatively or at first sign of disease
- Spray every 7 to 10 days
- Use in rotation with systemic fungicides

**Active ingredients :** garlic  
**Packaging :** One (1) case = 2 x 10L  
**Formulation Type :** Liquid concentrate  
**Chemical Group :** N/A Biopesticide  
**PHI :** 0 days  
**REI :** when spray is dry  
**Rates :** 1.8% (Do not exceed 18L/ha)



**Include Influence LC  
in your disease  
management program**



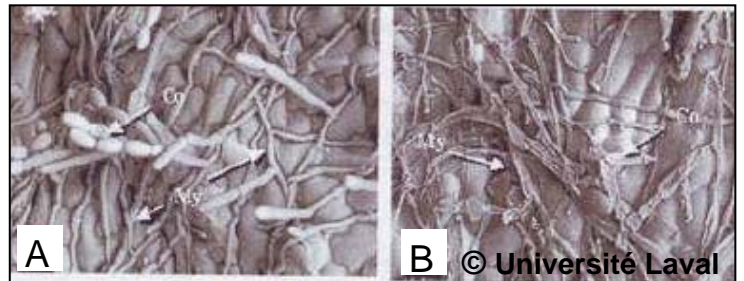
### Application Rates

Crop	Pest	Rate (%)
Greenhouse Tomato	Powdery mildew <i>Oidium neolycopersici</i>	1.8%
Greenhouse Cucumber	Powdery mildew <i>Podosphaera xanthii</i> <i>Erysiphe cichoracearum</i>	1.8%

## Influence LC in Action:

Influence LC works by inhibiting spore germination and mycelia growth of the pathogen fungus. When applied preventatively, Influence LC provides a protective layer on the leaf, flower or fruit making the surface hostiles to potential ascospores. This reduces the risk that the spores will develop. When applied curatively, Influence LC causes plasmolyzation of the conidie therefore the disease cannot reproduce and spread further. As well, the growth of the mycelium is suppressed and further damage to leaf and fruit is reduced.

# Contact Fungicide



**A:** Before treatment, the reproductive conidia are in chains and the mycelium develop abundantly on the leaf surface.

**B:** After treatment, the reproductive conidia and the mycelium are plasmolyzed and resemble empty shells.

## Effective suppression of powdery mildew

### Resistance Management

- Influence LC has minimum risk of resistance
- Great alternative for use as a rotational product and should be included in IPM programs

### Conventional and Organic Production

- Influence LC is approved for Organic Agriculture
- Influence LC is suitable for both conventional and organic production



## Garlic taste and smell does not transfer to crop

The taste and smell of crops sprayed with Influence LC are not altered in any way by the main ingredients of Influence LC. AEF Trial, Levis, Quebec. 2010.

Please refer to product label for complete application details. Always read and follow label directions. All information effective May 2014.  
Influence LC is registered in Canada by AEF Global. Log on to [www.aefglobal.com](http://www.aefglobal.com) for full label information.

